



SINCE 1903

**SERIES 06 MEDIUM DUTY
SPRING TINE HARROW**

**(INCLUDES 3 RANK, 4 RANK & 3 RANK WITH
EXTRA WIDE RANK SPACING)**

**PRODUCT MANUAL FOR
SECTIONS & SETS**

TABLE OF CONTENTS

Welcome Note	4
Safety	5
Usage Information	7
Normal Packaging	9
Assembly Instructions 3 Rank & 3 Rank With Extra Wide Rank Spacing	10
Assembly Instructions 4 Rank	11
Operating Instructions	13
Series 06 Parts Breakdown 3 Rank	16
Series 06 Parts Breakdown 4 Rank	19
Series 06 Parts Breakdown 3 Rank With Extra Wide Rank Spacing	22
Contact Information	18
Purchase Information	18

SPRING TINE HARROW SECTION & SETS SERIES 06

PRODUCT MANUAL

This Product Manual must be given to the Owner of the Harrow and the Operator(s) of the Harrow and any person(s) who carry out any service work / repairs to the Harrow.

This Product Manual contains important information about the Harrow and its Intended Use, Safety, Set Up & Assembly Instructions and Operating Instructions.

Please read this Product Manual. Thank you.

Additional copies of this publication are readily available direct from Murray Agricultural Equipment.

SERIES 06 SPRING TINE HARROW SECTION & SETS

Thank-you for selecting an item of equipment or service part manufactured or supplied by Murray Agricultural Equipment – building quality & value priced harrows for Australia & export markets. This product manual covers harrow sections, complete harrow sets and service parts.

Please study the information contained in this product manual. Please retain this product manual for reference and re-read it from time to time to refresh your memory. Please ensure all future operators and owners of this product study this manual or the latest edition of this manual. Additional copies of this publication or the most recent edition are readily available direct from Murray Agricultural Equipment.

Correctly assembled, operated & maintained, and used for the purpose for which it was designed, this product should provide productive service. Your attention is drawn to information contained in this manual. Following the appropriate guidelines and instructions will contribute to reliable, effective performance and maintain the manufacturer's product warranty cover.

SAFETY

“A Special note – Please read it”

- Work safely and promote safety at all times.
- Familiarize yourself, employees & contractors and other people with all and any safety warnings, marks or instructions issued, marked or affixed to this product. Work in accordance with these instructions at all times when around this product.
- This product is intended to be pulled (towed) by a tractor correctly fitted with an approved rollover protection structure. This product is NOT intended for use with an “ATV” or “Ride on Lawn Mower” or similar machine.
- Keep children away from farm machinery including this product. Do not allow children or any person or animal or item to ride or be carried by this product.
- This equipment is not intended to be used or operated, serviced or repaired by children under the age of 18 years or persons who are not medically fit.
- Children, especially young children, should be supervised to ensure that they do not play with or near this equipment. Encourage children to keep away from farm machinery including this product.
- Do Not climb on Agricultural Equipment including this product.
- You and other people must be especially aware of the dangers from moving, sharp, falling or mobile components or equipment including tractors and engines, and of the danger from mechanisms or assemblies that can be activated remotely by other people.

- Wear and use the appropriate safety clothing and equipment.
- This equipment is not intended to be used on or travel on roads or freeways.
- When transporting this product in conjunction with (connected to) a tractor or another vehicle, transport only when safe to do so and **transport speed** (not work speed) should not exceed 10 kph.
- Electrical Safety; “Look Up And Live” When near powerlines, always Look Up And Live & Look Around And Live. Contact with powerlines and other electrical wires can end in tragedy.
- Replace any safety or warning labels on this product if they become damaged, unclear or unreadable. Labels are available as a service part.

SERIES 06 SPRING TINE HARROW SECTION & SETS: USAGE INFORMATION

The Murray Series 06 Spring Tine Harrow Section is designed to be used as a “**Medium**” duty “Levelling Style” Harrow pulled (towed) by a **tractor correctly fitted with an approved rollover protection structure**. In general they are suitable for levelling operations on prepared heavier ground in conjunction with primary and secondary tillage implements. A Series 06 Spring Tine Harrow section may be referred to as a Finger Tine Harrow. Maximum operating speed is 10 km / hour. The Series 06 Spring Tine Harrow is **Not** recommended for use on pasture; the tines and harrow frame will / may bend. For Harrows recommended for pasture, please refer to the Murray Series 20 Pasture Harrow – “Medium / Heavy Duty” and the Murray Series 05 Pastureland Harrow – “Light Duty”.

NOT INTENDED FOR USE WITH AN “ATV” OR “RIDE ON LAWN MOWER”

MURRAY SERIES 06 SPRING TINE HARROW SECTION(S) & SETS (OR ANY OTHER MURRAY HARROW) ARE NOT TO BE ATTACHED TO / USED IN CONJUNCTION WITH OR PULLED BY AN “ATV” OR “RIDE ON LAWN MOWER” OR SIMILAR MOTIVE POWER MACHINE.

Murray Agricultural Equipment expressly prohibit the attachment to / use with or pulling by an “ATV” or “Ride On Lawn Mower” or similar form of machine regarding Series 06 Spring Tine Harrow Section(s) & Sets or any other Murray Harrow.

If, for whatever reason, attachment / or use in conjunction with or pulling by an “ATV” or “Ride On Mower” or similar form of machine was being considered **STOP NOW!**

DO NOT PROCEED WITH ASSEMBLY OR ATTACHMENT!

If you purchased these Harrows **brand new** contact the Murray Dealer that sold these Harrows to you or Murray Agricultural Equipment **NOW to arrange a return of these Harrows.**

SET UP INSTRUCTIONS

DANGER; Use extreme caution to prevent injury when handling or working with the spring tine sections (points) as the tines can be sharp. A Tine or Tines should never be assembled in any other position that the way they were designed or intended to be positioned.

When assembling equipment for delivery or in preparation for field work please follow these general instructions. Always refer to the appropriate assembly drawings and / or instructions during assembly.

“Left” and “Right” are relative to a position behind the implement looking forward to the hitch point.

Assemble the implement on a solid, level surface wherever possible.

SERIES 06 SPRING TINE HARROW SECTION & SETS: NORMAL PACKAGING

The following items should be included;

HARROW SECTIONS; Spring Tine Harrow sections, if section(s) only have been specified.

HARROW SET;

Quantity Description

1 or 2 Series 06 Mount Arms

1 Series 06 Tine Section complete

Multiples of Harrow Sets can be supplied to suit Primary Machine width.

**SERIES 06 SPRING TINE HARROW SECTIONS & SETS:
ASSEMBLY INSTRUCTIONS (3 RANK & 3 RANK WITH EXTRA
WIDE RANK SPACING)**

SAFETY TIP: Safety Glasses should be correctly worn by the person(s) removing tie-wires.

STEP 1: Remove all items of packaging, including strapping, tie-wires and shipping tags etc; from components.

STEP 2: Position evenly and secure Series 06 Mount Arms to the rear toolbar of the Primary Machine by removing the clamp retaining plate, nuts & washers. Proceed to refit clamp plate to bolts and tighten nuts and washers.

STEP 3: If required, remove pressure arm positioning bolt (part number 11 on page 15). Adjust height and replace bolt and tighten.

STEP 4: Remove the “U” Bolts from the Mount Arms (part number 16 on page 15).

STEP 5: Position Tine Section bracket up to the mount arms and replace “U” bolts. Make sure tine section is adjusted for level operation and tighten nuts. (Make sure that the long handle of the 3rd rank is at the back and kink in tines runs forward.)

STEP 6: Adjust the tine angle by moving the 3rd rank tine pipe handle forward or back. Remove the “R” clip and washer from the pin in the 1st rank small handle and angling bar. Then reattach the washer and “R” clip through the angling adjustment bar.

SERIES 06 SPRING TINE HARROW SECTIONS & SETS: ASSEMBLY INSTRUCTIONS (4 RANK)

SAFETY TIP: Safety Glasses should be correctly worn by the person(s) removing tie-wires.

STEP 1: Remove all items of packaging, including strapping, tie-wires and shipping tags etc; from components.

STEP 2: Position evenly and secure Series 06 Mount Arms to the rear toolbar of the Primary Machine by removing the clamp retaining plate, nuts & washers. Proceed to refit clamp plate to bolts and tighten nuts and washers.

STEP 3: If required, remove pressure arm positioning bolt (part number 11 on page 15). Adjust height and replace bolt and tighten.

STEP 4: Remove the “U” Bolts from the Mount Arms (part number 16 on page 15).

STEP 5: Position Tine Section bracket up to the mount arms and replace “U” bolts. Make sure tine section is adjusted for level operation and tighten nuts. (Make sure that the long handle of the 4th rank is at the back and kink in tines runs forward.)

STEP 6: Adjust the tine angle by moving the 4th rank tine pipe handle forward or back. Remove the “R” clip and washer from the pin in the 3rd rank small handle and angling bar. Then reattach the washer and “R” clip through the angling adjustment bar.

ASSEMBLY TIP; The greater the Tine layback, the better trash flow.

SPECIAL NOTES:

Please ensure that the Mount Arms are evenly spaced, as uneven weight distribution may negatively affect the performance of this product.

Tine leg runs down the front of the Tine pipe and around the back of the bolt in the direction of travel.

Please dispose of any packaging and shipping items thoughtfully. Thank you.

SERIES 06 SPRING TINE HARROW SECTIONS & SETS: OPERATING INSTRUCTIONS

Recommended maximum working speed is **10 kph**. For better results, and to safeguard the implement, do not operate the harrow above this speed. Operation at a speed greater than 10 kph will result in premature wear and damage to the harrow and may void manufacturer's product warranty.

Replace any safety or warning labels on this product if they become damaged, unclear or unreadable. Labels are available as a service part.

Inspect this product prior to use. Ensure that all mount points, bolts, clamp plates and U bolts are correctly assembled / attached. Replace any parts on this product if they become worn or unserviceable.

Murray Agricultural Equipment does **not** recommend the adding of extra weight to their harrow sets or harrow sections.

NEVER GET UNDERNEATH A HARROW; Safe work practice directs that operators and other persons never get underneath a Harrow Section or Harrow Set or components of a Harrow at any time while attempting to clear or clean the Harrow of weed matter or any other material or blockage and when carrying out maintenance or at any other time whether the Harrow Section or Set or components of a Harrow are attached to a primary machine. Failure to do so will / may result in death or serious injury.

NO RIDING ON A HARROW; Owners and Operators must ensure that no person(s) or animals ride or are carried etc on Murray Harrows. Failure to do so will / may result in death or serious injury.

STAND CLEAR OF “PINCH POINTS”; Owners and Operators must ensure no person(s) or animal(s) are permitted to stand within or be allowed to be nearby a “Pinch Point”. A Pinch Point maybe an area between the front of a Hoist Frame & Harrow Front Lift Drawbar and the rear of a tractor when the Hoist Frame is connected to a tractor.

A Pinch Point maybe an area between a Harrow Set and the rear of a tractor when the Harrow Set is NOT connected to a tractor and the tractor is being reversed so as to enable the Harrow Set to be attached to the tractor. A Pinch Point maybe an area between the tractor’s rear tyres and a drag type Harrow Front Drawbar when the tractor and attached Harrow Set is turning a corner.

Operating Instructions for Towing Vehicles;

This equipment is not intended to be used on or travel on roads or freeways. When transporting this product in conjunction with (connected to) a tractor or another vehicle, transport only when safe to do so and **transport speed** (not work speed) should not exceed 10 kph.

When towing equipment combinations, the maximum equipment combination ground speed shall be limited to the lowest specified ground speed of any of the towed machines.

The maximum travel speed is that specified in the operator’s manual(s), Speed Identification Symbol (S I S), or

information sign of towed equipment, or the limit of the road conditions, **whichever is the lesser**.

GENERAL

Additional copies of this publication are readily available. Please contact Murray Agricultural Equipment.

We do not recommend the adding of any extra weight to this harrow.

If you require assistance in any way with a Murray Series 37 Spring Tine Section & Set please contact your dealer, area distributor (where applicable) or Murray Agricultural Equipment.

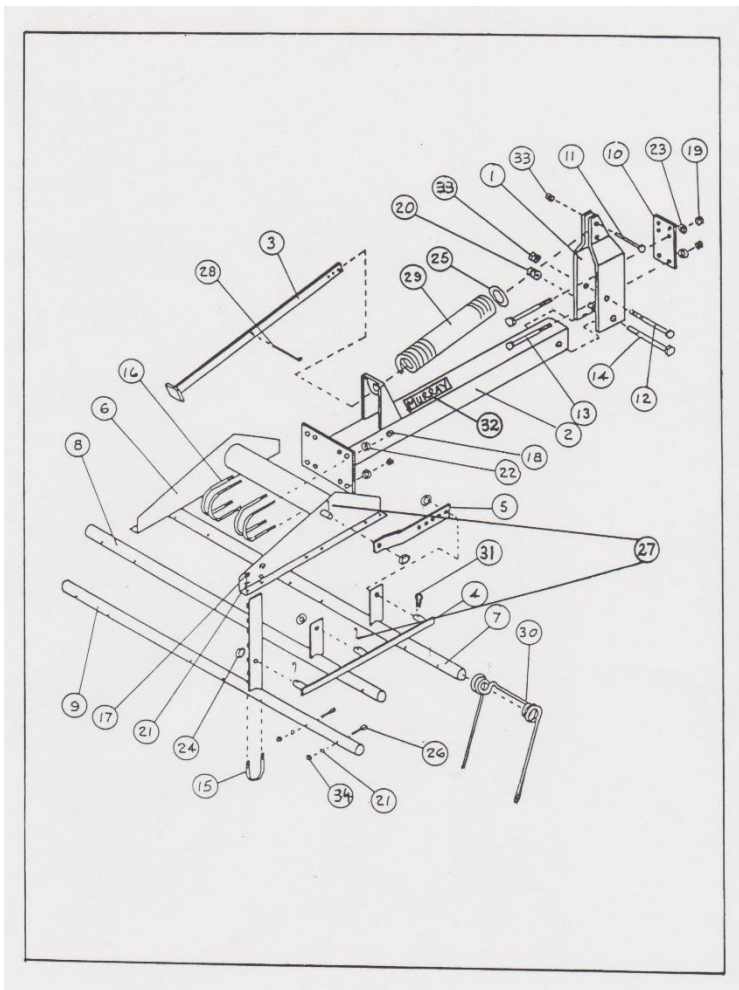
Information contained herein is from data available at time of publishing. Due to a policy of continual product research and evaluation, Hugh Murray & Son Pty Ltd trading as Murray Agricultural Equipment reserves the right to change specifications without notice and without obligation.

E. & O. E.

Copyright January 2017

NOTES

SERIES 06 SPRING TINE HARROW SECTION: PARTS BREAKDOWN (3 RANK)

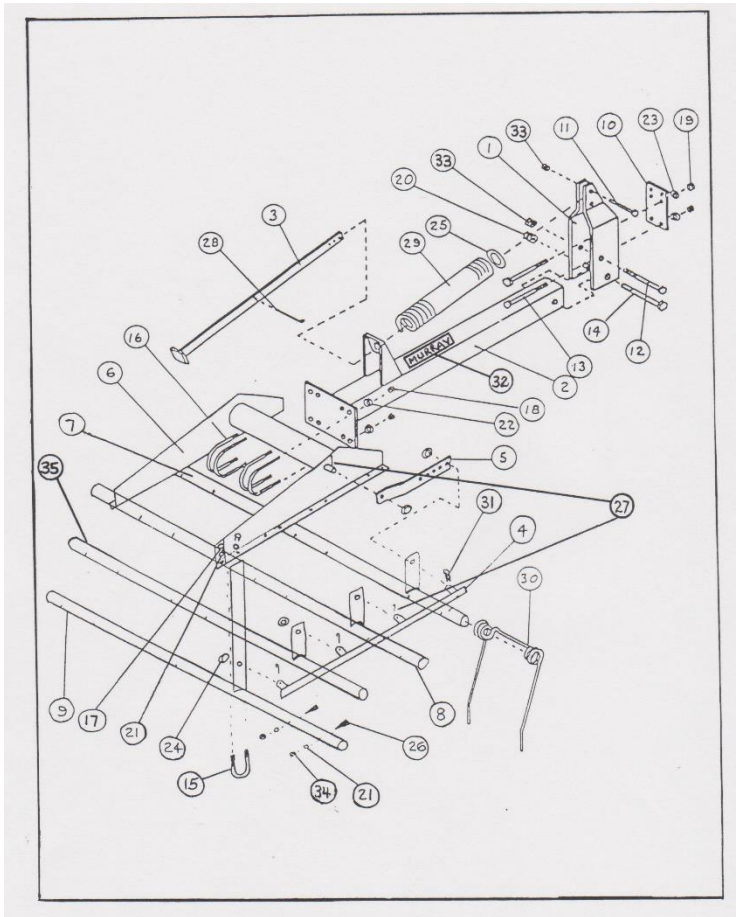


Ref No.	Part No.	Description
1	106001	Frame Mount Bracket Weld Assembly
2	106002	Extension Bar Assembly
3	106004	Pressure Bar Weld Assembly
4	106052	Angling Bar 3 Rank Weld Assembly
5	106006	Angling Adjustment Bracket 5 Hole
6	106008	"H" Section Weld Assembly 1.37m
	106007	"H" Section Weld Assembly 1.83m
	106065	"H" Section Weld Assembly 2.28m
7	106011	Tine Pipe – 1 st Rank Weld Ass 1.37m
	106010	Tine Pipe – 1 st Rank Weld Ass 1.83m
	106048	Tine Pipe – 1 st Rank Weld Ass 2.28m
8	106014	Tine Pipe – 2 nd Rank Weld Ass 1.37m
	106013	Tine Pipe – 2 nd Rank Weld Ass 1.83m
	106049	Tine Pipe – 2 nd Rank Weld Ass 2.28m
9	106017	Tine Pipe – 3 rd Rank Weld Ass 1.37m
	106016	Tine Pipe – 3 rd Rank Weld Ass 1.83m
	106050	Tine Pipe – 3 rd Rank Weld Ass 2.28m
10	106019	Retainer Plate Only
11	190236	Bolt 3/8" x 1 3/4"
12	190237	Bolt 3/8" x 4 1/2"
13	190271	Bolt 5/8" x 6"
14	190239	Bolt 3/4" x 5"
15	106020B	"U" Bolt – Small 3/8"
16	106021B	"U" Bolt – Large 1/2"
17	190226	Nut 3/8"
18	190269	Nut 1/2"
19	190268	Nut 5/8"
20	190266	Nut Nyloc 3/4"
21	190512	Spring Washer 3/8"
22	190516	Spring Washer 1/2"
23	190570	Spring Washer 5/8"
24	190517	Flat Washer 1/2"
25	106056	Washer – Spring Retaining
26	190235	Special Head Bolt 3/8" x 2 1/8"

27	190513	Split Pin 5 x 32mm
28	190589	Split Pin 8 x 50mm
29	106023	Pressure Spring
30	106066	Spring Tine, Tine Only Double "Kinked"
	106090	Spring Tine, Tine Only Double "Straight"
31	190615	"R" Clip
32	190582	"Murray" Label
33	190265	Nut Nyloc 3/8"
34	190267	Nut 3/8"

Please see your local dealer for any spare part requirements.

SERIES 06 SPRING TINE HARROW SECTION: PARTS BREAKDOWN (4 RANK)

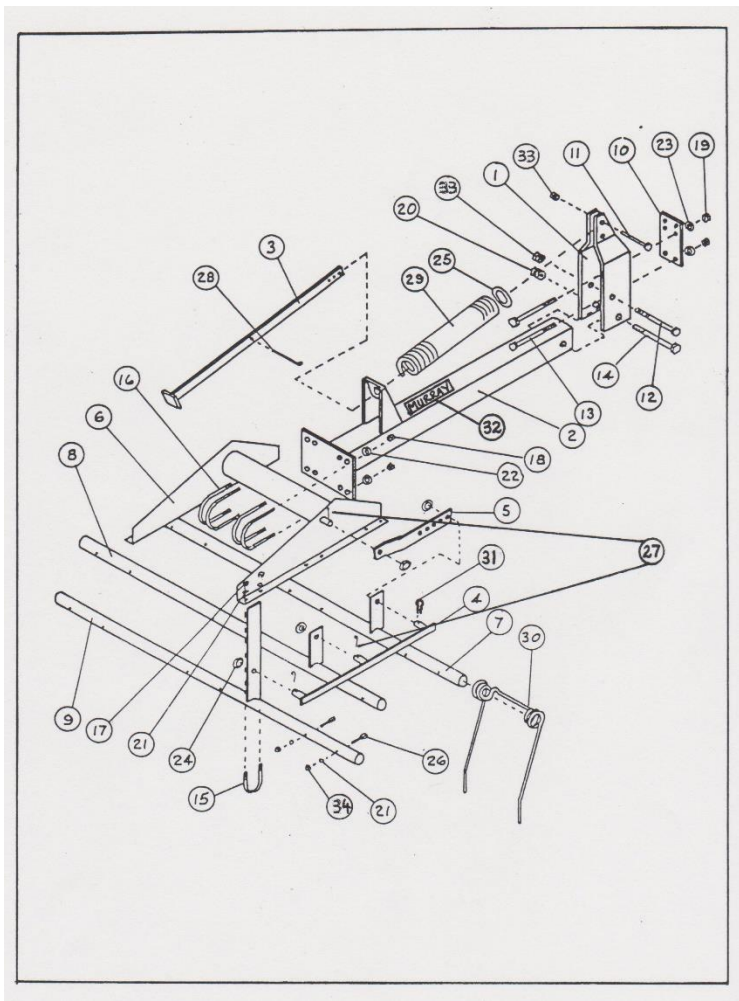


Ref No.	Part No.	Description
1	106001	Frame Mount Bracket Weld Assembly
2	106002	Extension Bar Assembly
3	106004	Pressure Bar Weld Assembly
4	106070	Angling Bar 5 Rank Weld Assembly
5	106101	Angling Adjustment Bracket 5 Hole
6	106099	"H" Section Weld Assembly 1.37m
	106071	"H" Section Weld Assembly 1.83m
	106100	"H" Section Weld Assembly 2.28m
7	106011	Tine Pipe – 1 st Rank Weld Ass 1.37m
	106010	Tine Pipe – 1 st Rank Weld Ass 1.83m
	106048	Tine Pipe – 1 st Rank Weld Ass 2.28m
8	106014	Tine Pipe – 2 nd Rank Weld Ass 1.37m
	106013	Tine Pipe – 2 nd Rank Weld Ass 1.83m
	106049	Tine Pipe – 2 nd Rank Weld Ass 2.28m
35	106128	Tine Pipe – 3 rd Rank Weld Ass 1.37m
	106129	Tine Pipe – 3 rd Rank Weld Ass 1.83m
	106130	Tine Pipe – 3 rd Rank Weld Ass 2.28m
9	106102	Tine Pipe – 4 th Rank Weld Ass 1.37m
	106103	Tine Pipe – 4 th Rank Weld Ass 1.83m
	106104	Tine Pipe – 4 th Rank Weld Ass 2.28m
10	106019	Retainer Plate Only
11	190236	Bolt 3/8" x 1 3/4"
12	190237	Bolt 3/8" x 4 1/2"
13	190271	Bolt 5/8" x 6"
14	190239	Bolt 3/4" x 5"
15	106020B	"U" Bolt – Small 3/8"
16	106021B	"U" Bolt – Large 1/2"
17	190226	Nut 3/8"
18	190269	Nut 1/2"
19	190268	Nut 5/8"
20	190266	Nut Nyloc 3/4"
21	190512	Spring Washer 3/8"
22	190516	Spring Washer 1/2"
23	190570	Spring Washer 5/8"

24	190517	Flat Washer ½"
25	106056	Washer – Spring Retaining
26	190235	Special Head Bolt 3/8" x 2 1/8"
27	190513	Split Pin 5 x 32mm
28	190589	Split Pin 8 x 50mm
29	106023	Pressure Spring
30	106066	Spring Tine, Tine Only Double "Kinked"
	106090	Spring Tine, Tine Only Double "Straight"
31	190615	"R" Clip
32	190582	"Murray" Label
33	190265	Nut Nyloc 3/8"
34	190267	Nut 3/8"

Please see your local dealer for any spare part requirements.

**SERIES 06 SPRING TINE HARROW SECTION: PARTS
BREAKDOWN (3 RANK WITH EXTRA WIDE RANK SPACING)**



Ref No.	Part No.	Description
1	106001	Frame Mount Bracket Weld Assembly
2	106002	Extension Bar Assembly
3	106004	Pressure Bar Weld Assembly
4	106314	Angling Bar 3 Rank Weld Assembly
5	106006	Angling Adjustment Bracket 5 Hole
6	106099	"H" Section Weld Assembly 1.37m
	106071	"H" Section Weld Assembly 1.83m
	106100	"H" Section Weld Assembly 2.28m
7	106011	Tine Pipe – 1 st Rank Weld Ass 1.37m
	106010	Tine Pipe – 1 st Rank Weld Ass 1.83m
	106048	Tine Pipe – 1 st Rank Weld Ass 2.28m
8	106014	Tine Pipe – 2 nd Rank Weld Ass 1.37m
	106013	Tine Pipe – 2 nd Rank Weld Ass 1.83m
	106049	Tine Pipe – 2 nd Rank Weld Ass 2.28m
9	106017	Tine Pipe – 3 rd Rank Weld Ass 1.37m
	106016	Tine Pipe – 3 rd Rank Weld Ass 1.83m
	106050	Tine Pipe – 3 rd Rank Weld Ass 2.28m
10	106019	Retainer Plate Only
11	190236	Bolt 3/8" x 1 3/4"
12	190237	Bolt 3/8" x 4 1/2"
13	190271	Bolt 5/8" x 6"
14	190239	Bolt 3/4" x 5"
15	106020B	"U" Bolt – Small 3/8"
16	106021B	"U" Bolt – Large 1/2"
17	190226	Nut 3/8"
18	190269	Nut 1/2"
19	190268	Nut 5/8"
20	190266	Nut Nyloc 3/4"
21	190512	Spring Washer 3/8"
22	190516	Spring Washer 1/2"
23	190570	Spring Washer 5/8"
24	190517	Flat Washer 1/2"
25	106056	Washer – Spring Retaining
26	190235	Special Head Bolt 3/8" x 2 1/8"

27	190513	Split Pin 5 x 32mm
28	190589	Split Pin 8 x 50mm
29	106023	Pressure Spring
30	106090	Spring Tine, Tine Only Double "Straight"
31	190615	"R" Clip
32	190582	"Murray" Label
33	190265	Nut Nyloc 3/8"
34	190267	Nut 3/8"

Please see your local dealer for any spare part requirements.

**MURRAY AGRICULTURAL EQUIPMENT CONTACT
INFORMATION:**

Hugh Murray & Son Pty Ltd ABN 74 004 169 135 Trading As
Murray Agricultural Equipment.
One Pickett Street
Dandenong VIC 3175
Australia

Phone (03) 9791-7033
Fax (03) 9791-1894
Email sales@murrayag.com.au
Web www.murrayag.com.au

CUSTOMER PURCHASE INFORMATION:

Date of Purchase:

Dealer Purchased From:

Model No.:

The above information will help us to service any warranty
claims.